

# MORLOCK **MTE** series

MTE Quick  
MTE 125  
MTE 125 LS

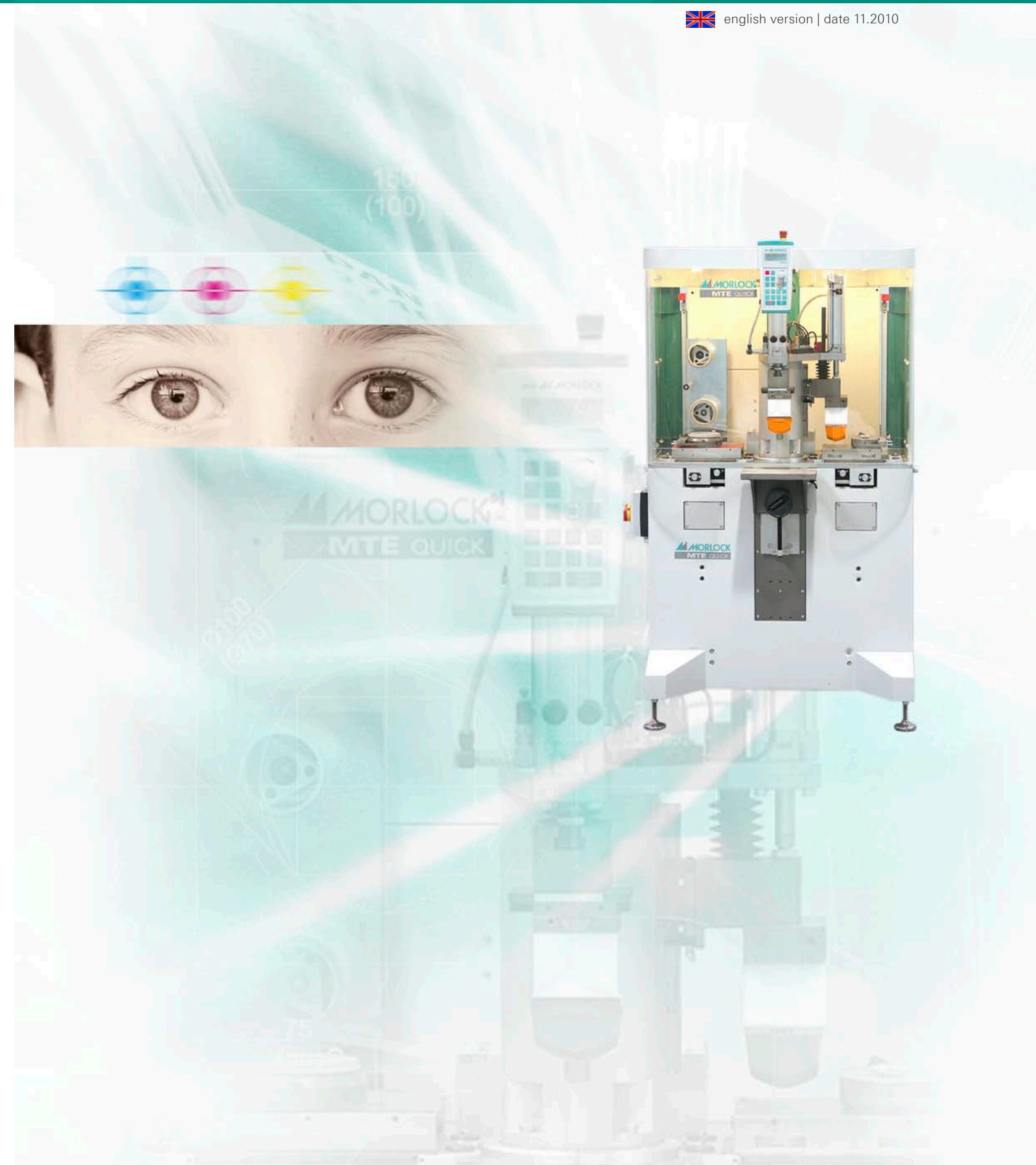
ITW MORLOCK GmbH  
Tampondrucksysteme

Lise-Meitner-Straße 9  
D-72280 Dornstetten

fon +49 (7443) 285-0  
fax +49 (7443) 285-299

info@morlock.de  
www.morlock.de

 english version | date 11.2010



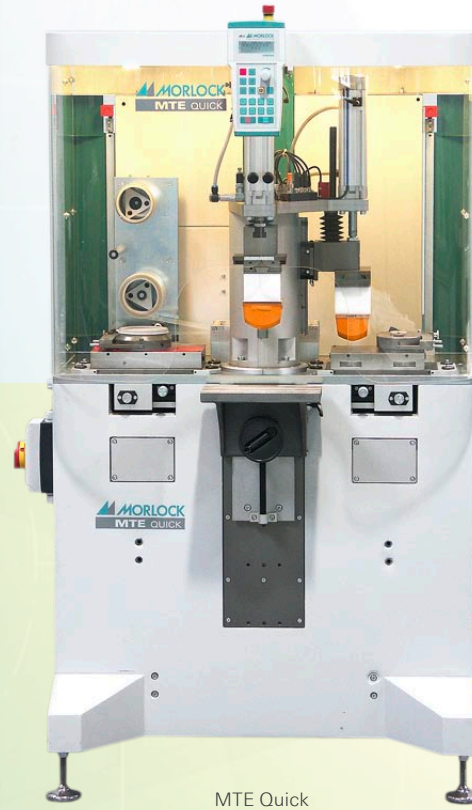
## MTE Quick

The MTE Quick provides many possibilities of adjustment as well as a **time optimized production run** via partial movements carried out in parallel:

- Printing heads can be **controlled individually**
- Adjustment of the **printing sequence**
- Printing possibility on **two different heights** of working piece

## At a glance!

- Can be set up for **two or single colour** pad printer (with corresponding increase in cycle rate)
- **Pad stroke separately adjustable** by direct insertion via display
- Interface for **interconnecting** to an external **SPS** available as a standard fitting
- compact ink cup system **MORLOCK MCI** (patented)
- as a manual working station or **integration into existing automation**



These technical data specifications refer to the state at the time of printing. We reserve the right to modify specifications in the interest of a continuous program of further development. Subject to deviations and mistakes.

## Technical specifications

	MTE Quick	MTE 125	MTE 125 LS
Cliché size, max.	125 x 250 mm 250 x 280 mm (Oval ink cup)	150 x 280 mm	125 x 600 mm
Print size, max.	Ø 105 mm / 70 x 70 mm	Ø 105 mm / 70 x 70 mm 160 x 80 mm (Oval ink cup)	max. 300 x 90 mm
Pad stroke	160 mm vertical	160 mm vertical	max. 160 mm
Pressure, max.	1.000 N (100 kp) Per pad unit	1.600 N (600 kp), Print cylinder at 6 bar	1.600 N (160 kp) or 3.200 N (special edition)
Capacity, max.	1.400 pieces/hour in two colours	1.000 pieces/hour in two colours	700 pieces/hour in two colours
Drive	Pneumatic pad stroke and printing head, pendulum movement - MEGATORQUE	Pneumatic pad stroke and printing head, pendulum movement - MEGATORQUE	electromechanical, pneumatic pad stroke and printing head
Controller	SPS SIEMENS S 7	SPS SIEMENS S 7	SPS SIEMENS S 7
Voltage	230 V ~ 50/60 Hz	230 V ~ 50/60 Hz	400 V ~ 50/60 Hz
Control voltage	24 V	24 V	24 V
Power consumption	ca. 500 W	ca. 1.500 W	ca. 1.500 W
Distance measurement	magn. distance measurement	magn. distance measurement	magn. distance measurement
Weight	appr. 300 kg	appr. 1.800 kg	appr. 2.000 kg
Dimensions*	appr. 940 x 900 x 1.700 mm	appr. 1.800 x 1.300 x 1.950 mm	appr. 1.600 x 1.530 x 1.950 mm

\*width x depth x height with safety guard and lateral swivelling control board

## MTE 125

The approved principle of the **MORLOCK Twister Ergonomic** of the MTE Quick is also applied for the MTE 125. The **MTE 125** has a centralized printing module which always rotates in a pendulum movement of 90°. So the two printing heads alternate between one of the inking systems, the printed work piece and the pad cleaning assembly.

In comparison to its smaller brother the MTE 125 provides **bigger printing images** as well as a **larger printing force**.



MTE 125

## MTE 125 „Long Slide“

With the **MTE 125 LS** the approved advantages of the MTE-series are combined with the qualities of the MORLOCK „Long-Slide“ (MLS-series)

Especially for **long print images** (up to 300x90mm) this pad printer offers a wide application spectrum.

As all machines of the MTE-series the MTE 125 LS has a **height adjustable angle table**, a **cliché adjustment** (X-Y- angle adjustments) and an adjustable **print pressure adaptation**.



MTE 125 LS