


ITW MORLOCK GmbH fon +49 (7443) 285-0
Tampondruck-Systeme fax +49 (7443) 285-299

Lise-Meitner-Straße 9 info@morlock.de
D-72280 Dornstetten www.morlock.de

MORLOCK **MKM** series

MKM 80.3
MKM 125.3
MKM 80.3 Multipos.
MKM 125.3 Multipos.
MKM 100-6

 english | 11.2011



Fully automated pad cleaning device

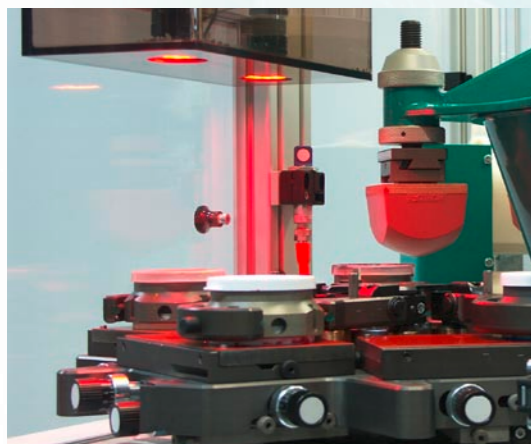
The continuous pad cleaning is additionally optimizing the ink cup time and printing quality without losing time. No additional working process is necessary because of the automatic pad cleaning during each printing cycle.



Patented **MCI** ink cup system

The closed ink cup system MORLOCK MCI allows higher ink cup times, shorter setting up times and easier handling.

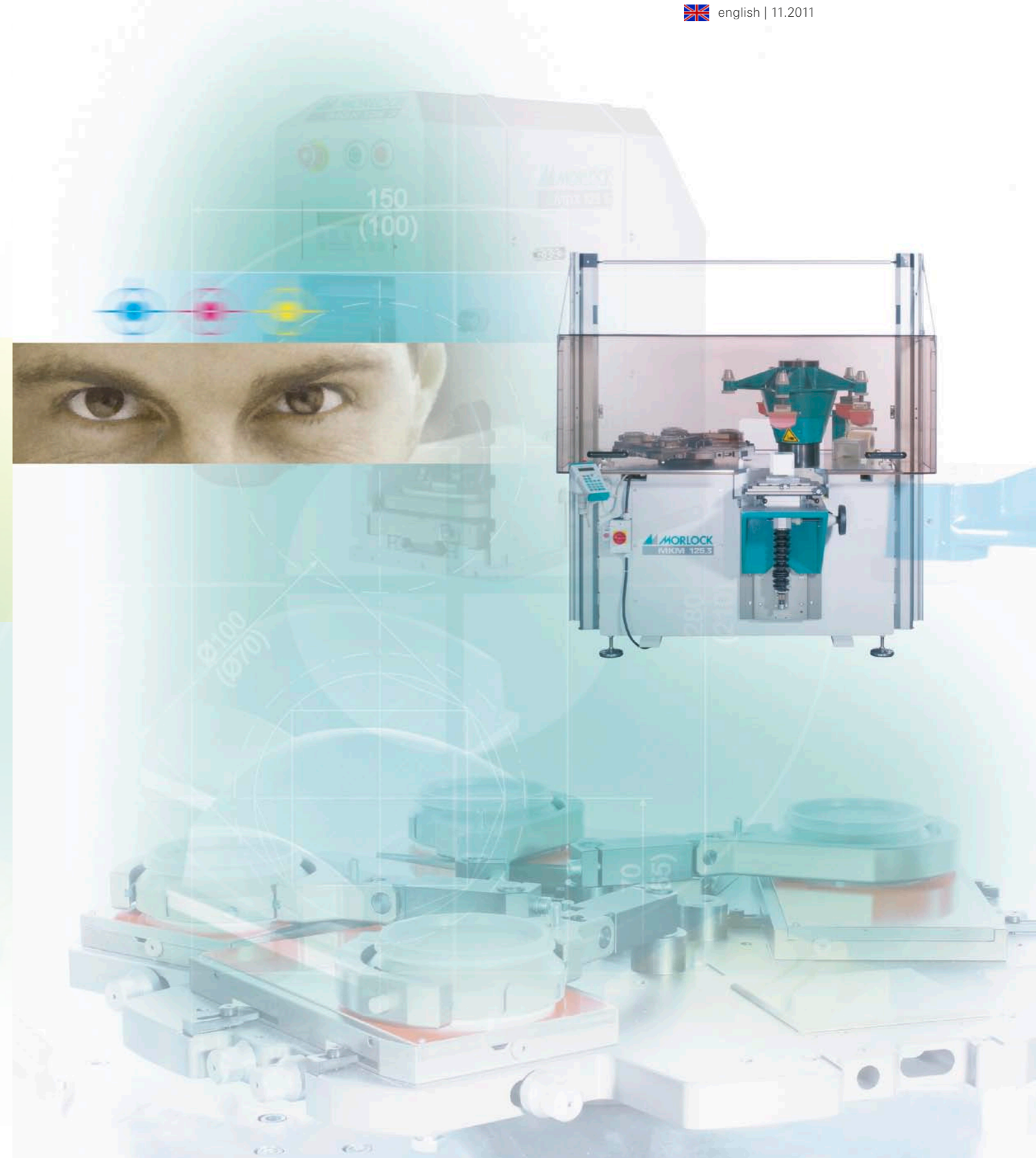
Much less spare parts are needed due to changeable doctoring rings made of metal or ceramic. By the radial ink cup fixation at the MKM series the doctoring rings are used more constantly and have a higher long life.



Optical **Cliché** Adjustment System

The Optical Cliché Adjustment System is extremely suitable at high product diversity with many print variants. This system is also ideal for complex printing images such as 4-colour screen printing (colour matching).

Without much time expense (85% time saving) and without printing tests you are able to adjust separate clichés perfectly to each other with this system.



MKM – The Exclusive

With the **proven carousel principle** the MKM series guarantees highest **precision** in a **high level printing** output in the multiple colour pad printing.

The MKM can be customised to your individual requirements on request. For this the MKM can be expanded f.ex. by an optical quality control or an optical positioning system.

Your MORLOCK-Team would be pleased to consult you!

At a glance!

- single or **multi-colour printing** with up to five colours
- comprehensible **Siemens S7** controller
- **Multi-Speed-Function** (the speed of each ink units can be adjusted individually)
- fully automated **pad cleaning device**
- compact ink cup system **MORLOCK MCI** (patented)
- as manual working station or **integration in existing automations**
- depending on your needs it can be **extended individually**

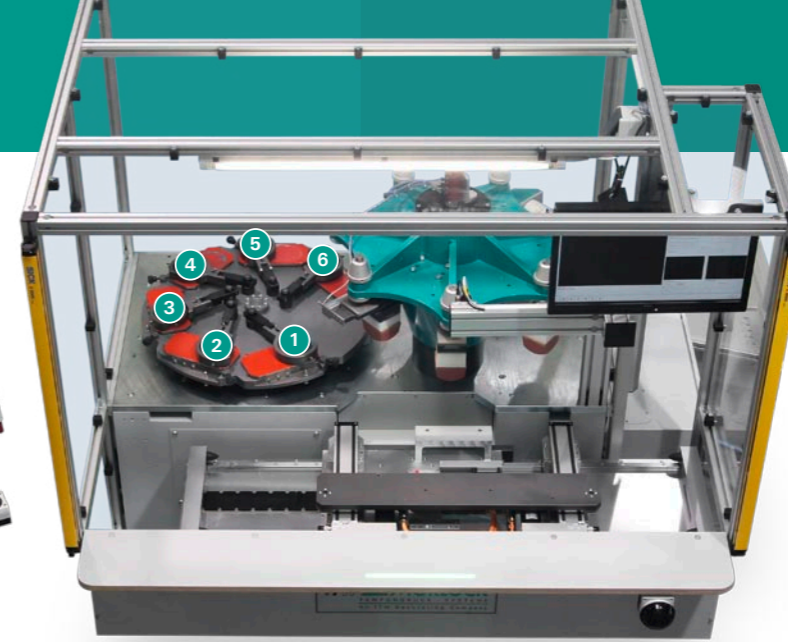
Technical specifications

	MKM 80.3 / Multipos.	MKM 125.3 / Multipos.	MKM 100-6
Cliché size	90 x 165 mm / 110 x 190 mm	150 x 280 mm	110 x 220 mm
Print size, max.	Ø 56 mm / Ø 75 mm	Ø 105 mm	Ø 80 mm
Pad stroke	80 mm	115 mm	115 mm
Pad height adjustment	50 mm	100 mm	100 mm
Pressure, max.	1500 N (150 kp)	4500 N (450 kp)	4500 N (450 kp)
Capacity, max.	800 pieces/hour in 4 colours, stepless adjustable	600 pieces/hour in 4 colours, stepless adjustable	450 pieces/hour in 6 colours, stepless adjustable
Drive	electromechanical	electromechanical	electromechanical
Controller	SPS SIEMENS S 7	SPS SIEMENS S 7	SPS SIEMENS S 7
Voltage	230 V ~ 50/60 Hz / 400 V ~ 50/60 Hz	400 V ~ 50/60 Hz	400 V ~ 50/60 Hz
Control voltage	24 V	24 V	24 V
Power consumption	ca. 700 W / ca. 2200 W	ca. 1500 W / ca. 3000 W	ca. 3000 W
Weight	ca. 450 kg / ca. 550 kg	ca. 1500 kg / ca. 1600 kg	ca. 1600 kg
Dimensions*	ca. 1425 x 920 x 1700 mm / depending on usage	ca. 1820 x 1350 x 2160 (2910) mm / depending on usage	ca. 1820 x 1350 x 2160 (2910) mm

*Width x depth x height with safety guard and lateral swivelling control board.



MKM 80.3



MKM 100-6

The newest machine of the MKM series can also handle true **6-colour printing!**

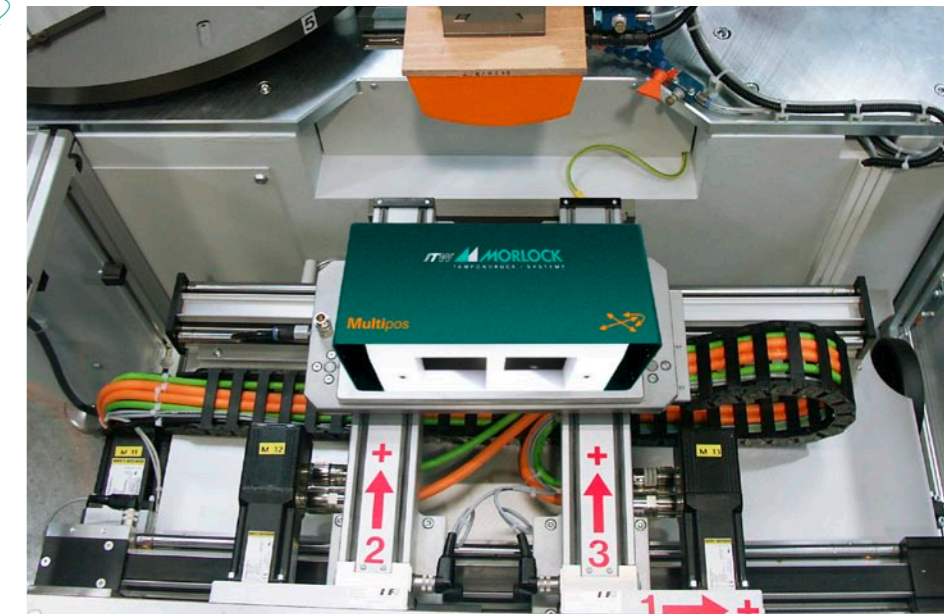
Fig. left: MKM 100-6 with protection, multipositioning system, Siemens S7 controller, automatic pad cleaning assembly and automatic print image adjustment.

Multipositioning system

The **flexible multipositioning system** offers X-Y angle position correction. This ensures the optimum setting of the print position and register mark correction.

Various different positions can be **separately stored** for each workpiece, making readjustment after a change of workpiece unnecessary.

The system is equally suitable for printing on large workpieces because it can move to a number of different positions.



Proceeding direction

MKM 80.3 Multipos. + MKM 125.3 Multipos	
X	variable
Y	on request (standard 285 mm)
angle	max 10°

These technical data specifications refer to the state at the time of printing. We reserve the right to modify specifications in the interest of a continuous program of further development. Subject to deviations and mistakes.